

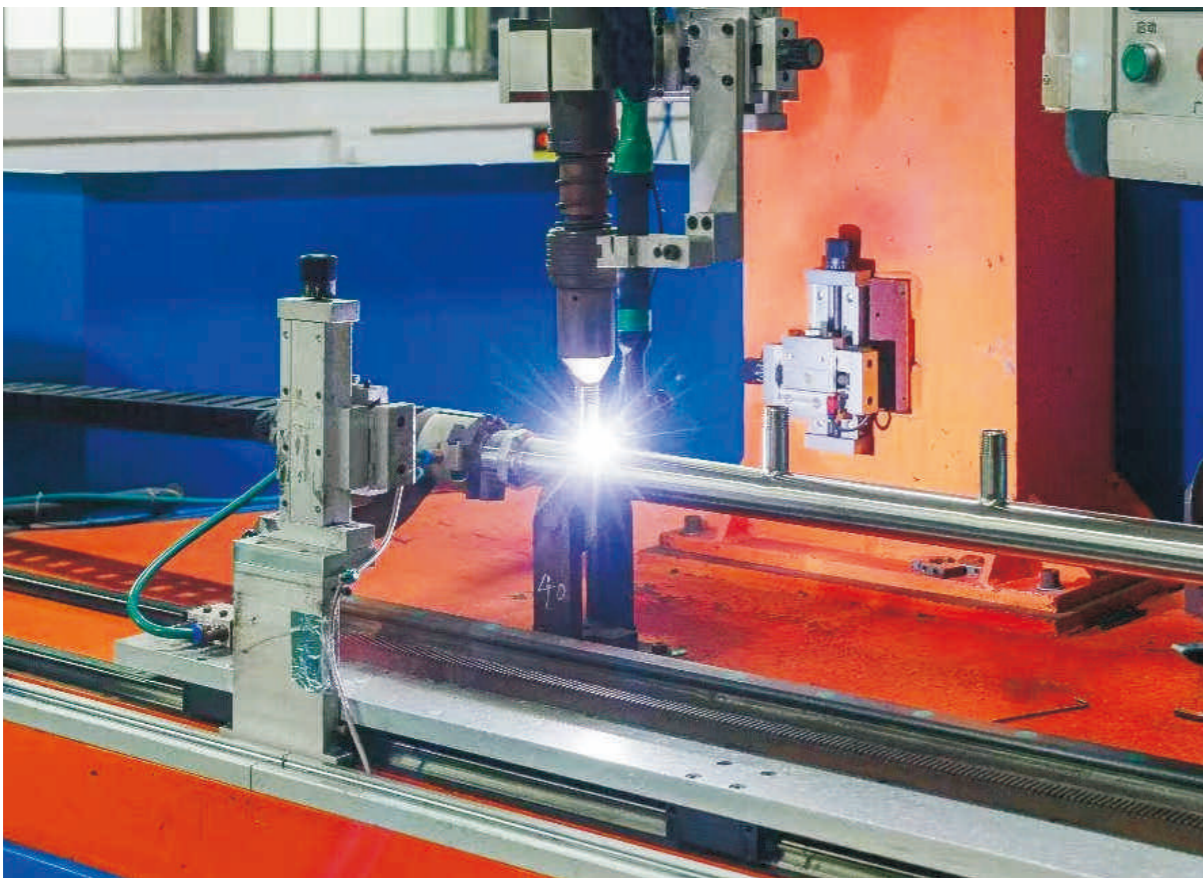
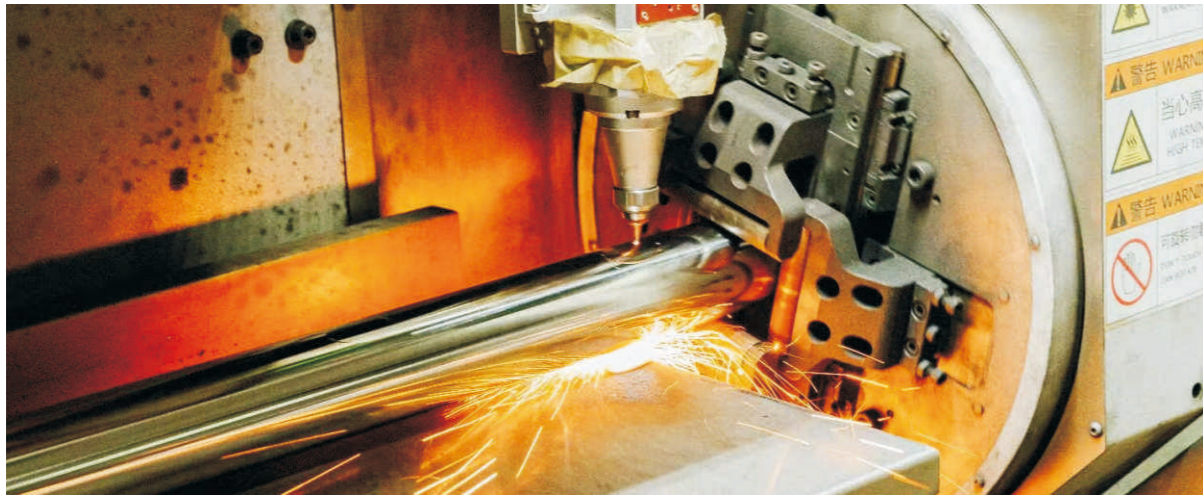


# Stainless steel pipeline

One-stop service for processing and production

## PRODUCTION EQUIPMENT

We have over 50 professional R&D and manufacturing equipment, including high-precision CNC machine tools and processing equipment.



## STAINLESS STEEL PIPE

ASTM A312, A778(B36.19)

Nominal Outside Diameter		OD(mm)	Thickness(mm)		
NPS	inch	O.D	5S	10S	40S
8	1/4"	13.72	1.24	1.65	2.24
10	3/8"	17.15	1.24	1.65	2.31
15	1/2"	21.34	1.65	2.11	2.77
20	3/4"	26.67	1.65	2.11	2.87
25	1"	42.16	1.65	2.77	3.38
32	1 1/4"	33.40	1.65	2.77	3.65
40	1 1/2"	48.26	1.65	2.77	3.68
50	2"	60.33	1.65	2.77	3.91
65	2 1/2"	73.03	2.11	3.05	5.16
80	3"	88.90	2.11	3.05	5.49
90	3 1/2"	101.60	2.11	3.05	5.74
100	4"	114.30	2.11	3.05	6.02
125	5"	141.30	2.77	3.40	6.55
150	6"	168.28	2.77	3.40	7.11
200	8"	219.08	2.77	3.76	8.18
250	10"	273.05	3.40	4.19	9.27
300	12"	323.85	3.96	4.57	9.53

JIS G3459

Nominal Outside Diameter		OD(mm)	Thickness(mm)		
NPS	inch	O.D	5S	10S	40S
8	1/4"	13.8	1.20	2.00	2.20
10	3/8"	17.3	1.20	2.00	2.30
15	1/2"	21.7	1.65	2.50	2.80
20	3/4"	27.2	1.65	2.50	2.90
25	1"	34.0	1.65	3.00	3.40
32	1 1/4"	42.7	1.65	3.00	3.60
40	1 1/2"	48.6	1.65	3.00	3.70
50	2"	60.5	1.65	3.50	3.90
65	2 1/2"	76.3	2.10	3.50	5.20
80	3"	89.1	2.10	4.00	5.50
90	3 1/2"	101.6	2.10	4.00	5.70
100	4"	114.3	2.10	4.00	6.00
125	5"	139.8	2.80	5.00	6.60
150	6"	165.2	2.80	5.00	7.10
200	8"	216.3	2.80	6.00	8.20
250	10"	267.4	3.40	6.00	9.30
300	12"	318.5	4.00	6.00	10.30

EN 10217-7

Thickness Gauge	1.20	1.60	2.00	2.30	2.60	2.90	3.20	3.60	4.00	4.50	5.00	5.60	6.30	7.10	8.00	8.80	10.00	11.00	12.50	14.20	
13.50																					
17.20																					
21.30																					
26.90																					
33.70																					
42.40																					
48.30																					
60.30																					
76.10																					
88.90																					
101.60																					
114.30																					
139.70																					
168.30																					
219.10																					
273.00																					
323.90																					

Tolerance

Item Standars	Outside Diameter Tolerance(mm)	Tolerance of Thickness(mm)	Straightness(mm)	Length(mm)
ASTM A312	≤48.26 +0.4 -0.8 >48.26-≤114.3 +0.8 -0.8 >114.3-≤219.08 +1.6 -0.8 >219.08 ≤457.2 +2.4 -0.8	±12.5%	6.4mm/6.0m	-6.0 -0.0
JIS G3459	< 30.0 ±0.3 ≥30.0 ±1.0%D	< 2.0 ±0.20 ≥2.0 ±10.0%		Defined length
GBIT 12771	< 40.0 ±0.3 ≥40.0-≤65.0 ±0.4 ≥65.0-≤90.0 ±0.5 ≥90.0-≤168.3 ±1.0 ≥168.3-≤325.0 ±1.0%D	±10.0%	>108.0 ≤1.5 >108.0-325.0 ≤2.0 (OD.mm/m)	+20.0 -0.0
EN 10217-7	D3±0.75% or ±0.3 D≤168.3 D4±0.5% or ±0.1 D> 160.3 D2±1.0%	T3 ±10.0% or ±0.2mm	3.0mm/m	L≤6.0m +5.0 -0.0 6.0m<L< 12.0m +10.0 -0.0 L≥12.0m By agreement

ASTM A312, A778(B36.19)

JIS G3459

Nominal Outside Diameter		OD(mm)	Thickness(mm)			Nominal Outside Diameter		OD(mm)	Thickness(mm)			
NPS	inch	O.D	5S	10S	40S	NPS	inch	O.D	5S	10S	20S	40S
350	14"	355.6	4.19	4.78	11.10	350	14"	355.6	4.00	5.00	8.00	11.10
400	16"	406.4	4.19	4.78	11.10	400	16"	406.4	4.50	5.00	8.00	12.70
450	18"	457.2	4.78	4.78	14.30	450	18"	457.2	4.50	5.00	8.00	14.30
500	20"	508.0	4.78	5.54	15.10	500	20"	508.0	5.00	5.50	9.50	15.10
550	22"	558.8	5.54	5.54	15.90	550	22"	558.8	5.00	5.50	9.50	15.90
600	24"	609.6	6.35	6.35	17.50	600	24"	609.6	5.50	6.50	9.50	17.50
650	26"	660.4	-	7.92	-	650	26"	660.4	5.50	8.00	12.70	-
700	28"	711.2	-	7.92	-	700	28"	711.2	5.50	8.00	12.70	-
-	30"	762.0	6.35	7.92	-	-	30"	762.0	6.50	8.00	12.70	-
800	32"	812.8	-	7.92	-	800	32"	812.8	-	8.00	12.70	-
-	34"	863.6	-	7.92	-	-	34"	863.6	-	8.00	12.70	-
900	36"	914.4	-	7.92	-	900	36"	914.4	-	8.00	12.70	-
-	38"	965.2	-	-	-	-	38"	965.2	-	-	-	-
1000	40"	1016.0	-	9.53	-	1000	40"	1016.0	-	-	-	-
1050	42"	1066.8	Nominal diameter and wall thickness subject to the approval of vendor and purchaser.			1050	42"	1066.8	Nominal diameter and wall thickness subject to the approval of vendor and purchaser.			
2000	80"	2032.0				2000	80"	2032.0				

EN 10217-7

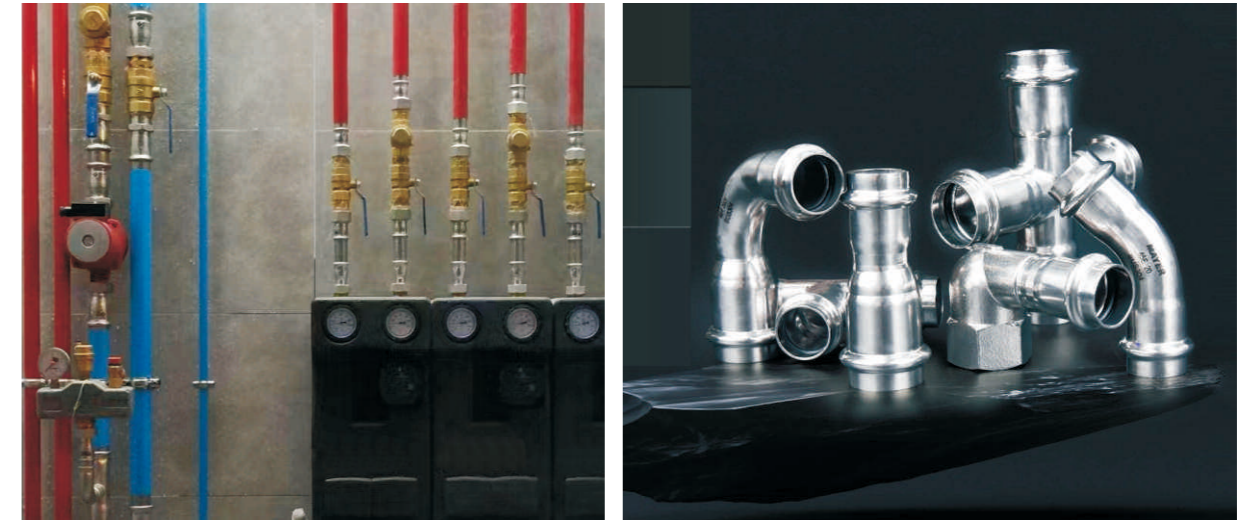
Thickness Gauge	1.20	1.60	2.00	2.30	2.60	2.90	3.20	3.60	4.00	4.50	5.00	5.60	6.30	7.10	8.00	8.80	10.00	11.00	12.50	14.20	
355.60																					
406.40																					
457.00																					
508.00																					
610.00																					
711.00	Nominal diameter and wall thickness subject to the approval of vendor and purchaser.																				
1016.00																					

Tolerance

Item Standars	Outside Diameter Tolerance(mm)	Tolerance of Thickness(mm)	Straightness(mm)	Length(mm)
ASTM A312	>219.00 ≤457.2 +2.4 -0.8 >457.2 ≤660.4 +3.2 -0.8 >660.4 ≤863.2 +4.0 -0.8 >863.2 +4.48 -0.8	±12.5%	6.4mm/6.0m	-50.0 -0.0
ASTM A358	±0.5%D 1% (Difference between major and minor outside diameters)	The minimum wall thickness in the pipe shall not under 0.3mm		
JIS 3468	≤318.5 ±1.0%D ≥355.6 ±0.5%D	<555.8 T<8.0mm ±12.5% T≥8.0mm ±10.0% ≥555.8 T<8.0mm -12.5%+ T≥8.0mm -10.0%+		Defined length
GBIT 12771	≥325-610 ±1.0% ≥610 ±0.7%D or +10mm	±10.0%	>108.0-325.0 ≤2.5 >325.0 ≤2.5 (OD.mm/m)	+20.0 -0.0
EN 10217-7	D>168.3 D2±1.0%	±10.0%	3.0mm/m	L≤6.0m +5.0 -0.0 L<12.0m +10.0 -0.0 L≥12.0m By agreement

Product Application: Products are widely applicable in the area of chemical, industry, petroleum, papermaking, energy, sewage engineering and etc.





## INSPECTION of FINISHED PRODUCTS

### Pipes

Each pipe has its own traceability code. Pipes can be traced back to each production process till the source of raw material after leaving the factory.

100% pass online and offline intelligent eddy current testing

100% pass hydro-static test of 2.5Mpa

1.3D extension, flanging and flattening test

Dimension measurement (outer diameter, thickness, length), visual inspection;

Other testing required by customers can be realized



### Fittings

Each fitting has its own traceability code. Fittings can be traced back to every production process till the source of raw material after leaving the factory.

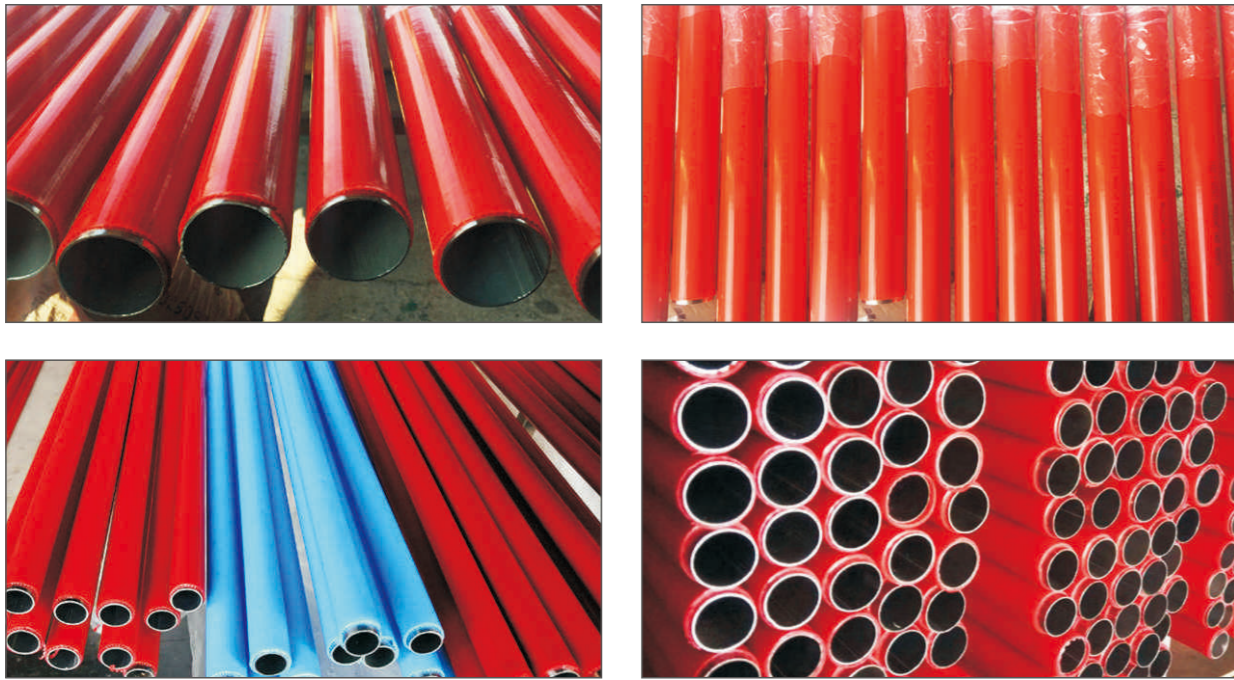
100% pass dimension measurement (Outer Diameter, Thickness, Length)

100% pass air tightness test

100% fittings are with annealing treatment, and pass hardness test, hydro-static test, salt spray test, inter-granular corrosion test and other related standard tests. More tests requested by customers are achievable.

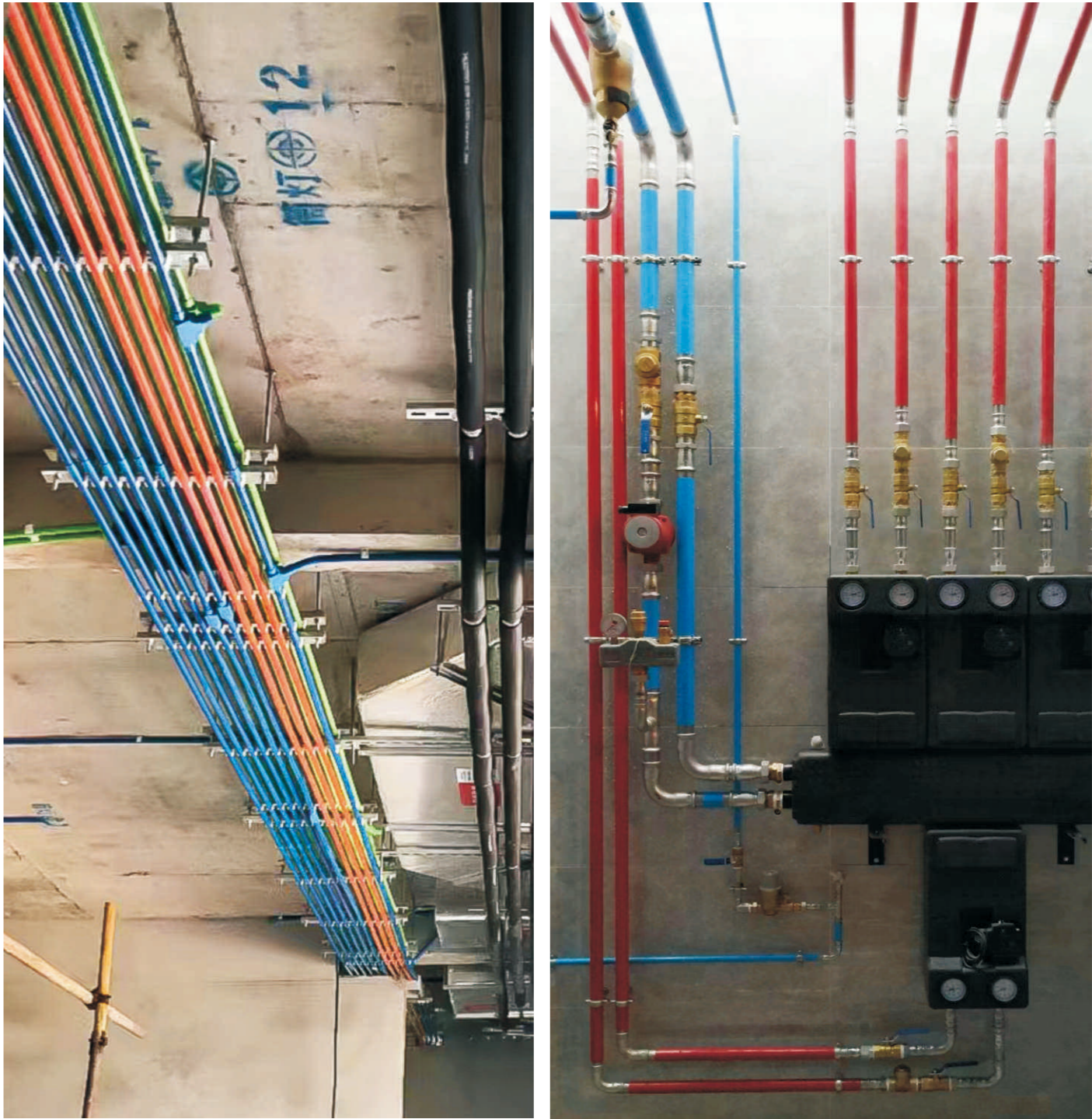


# Stainless steel single row water separator

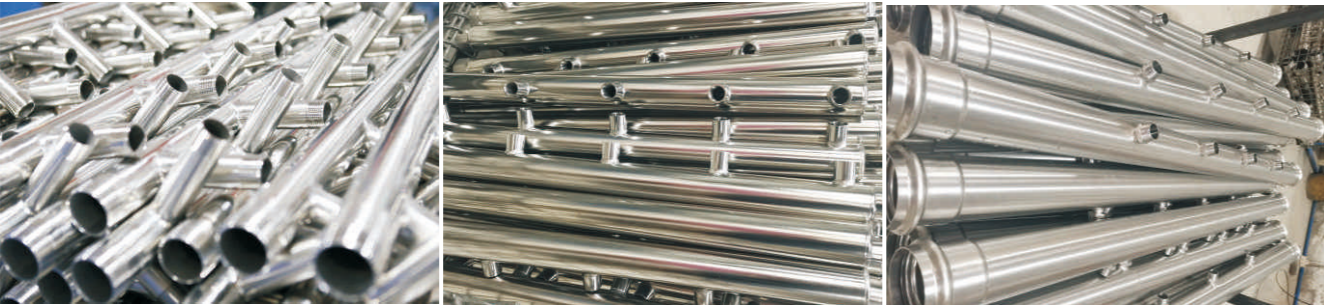


# household water for decoration

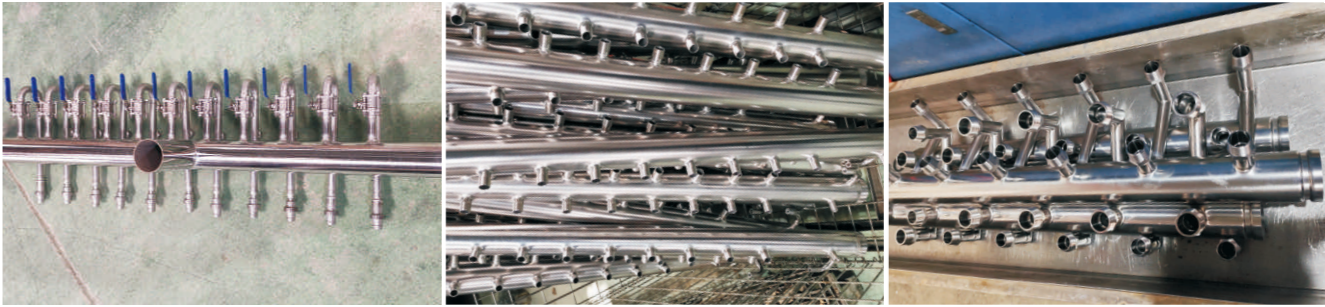
It is commonly used in tap water meter installation projects, home decoration projects, direct drinking water projects, cold and hot water supply, and super high-rise water supply. Made of 304/316L material, it is safe, hygienic, reliable, durable, easy to install, has a long service life, with a smooth inner wall, and is resistant to corrosion.



# Stainless steel single row water separator



# Stainless steel multi row water separator



## Stainless steel steady flow tube



## Schematic diagram of water injection installation

The stainless steel water diverter is easy to install and can be interchanged with various water supply fittings and pipes.

There are no pollutants on the construction site, and it does not pollute the environment.

1. Select stainless steel flow stabilizing tube



Stainless steel flow stabilizing tube

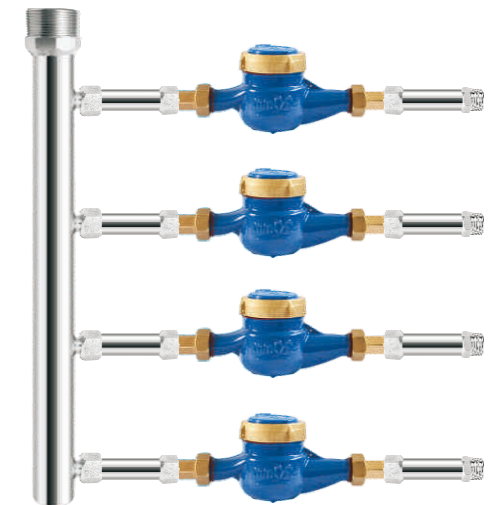


Stainless steel short tube

2. Install the stainless steel flow stabilizing tube on both sides of the water meter

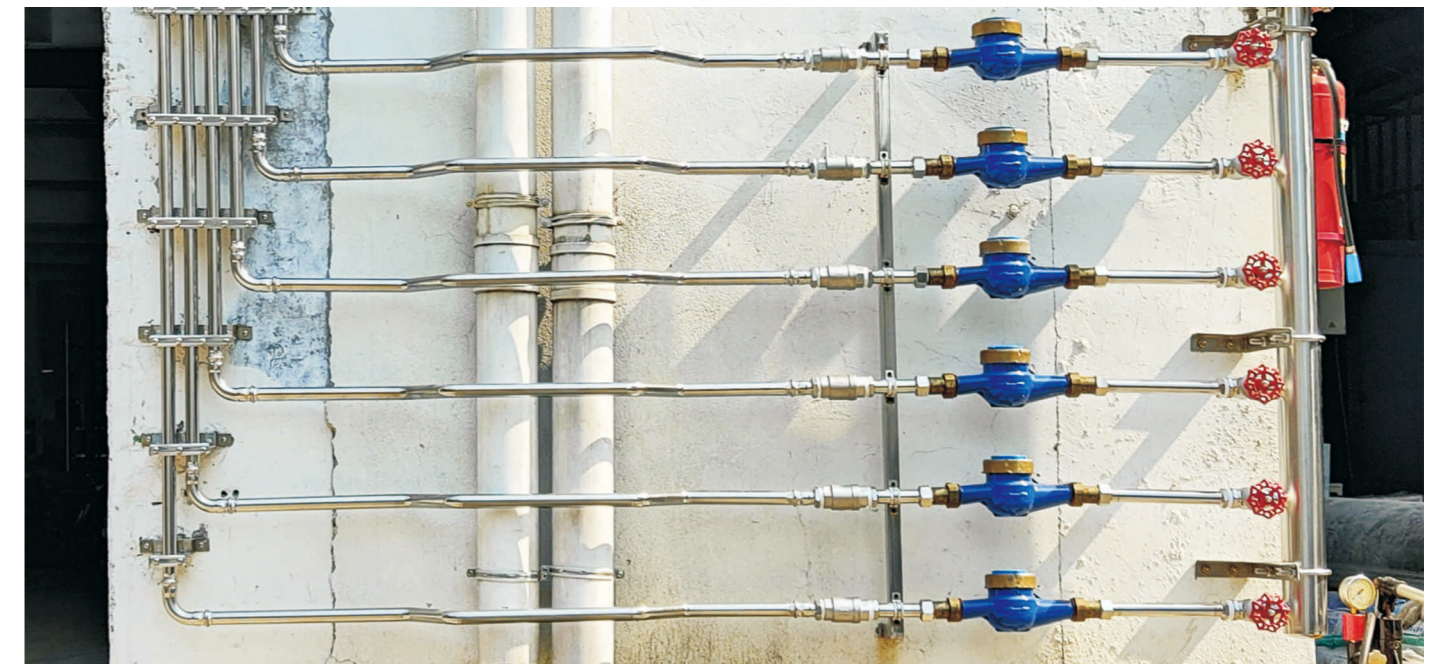


3. Install the stainless steel flow stabilizing tube on the water separator

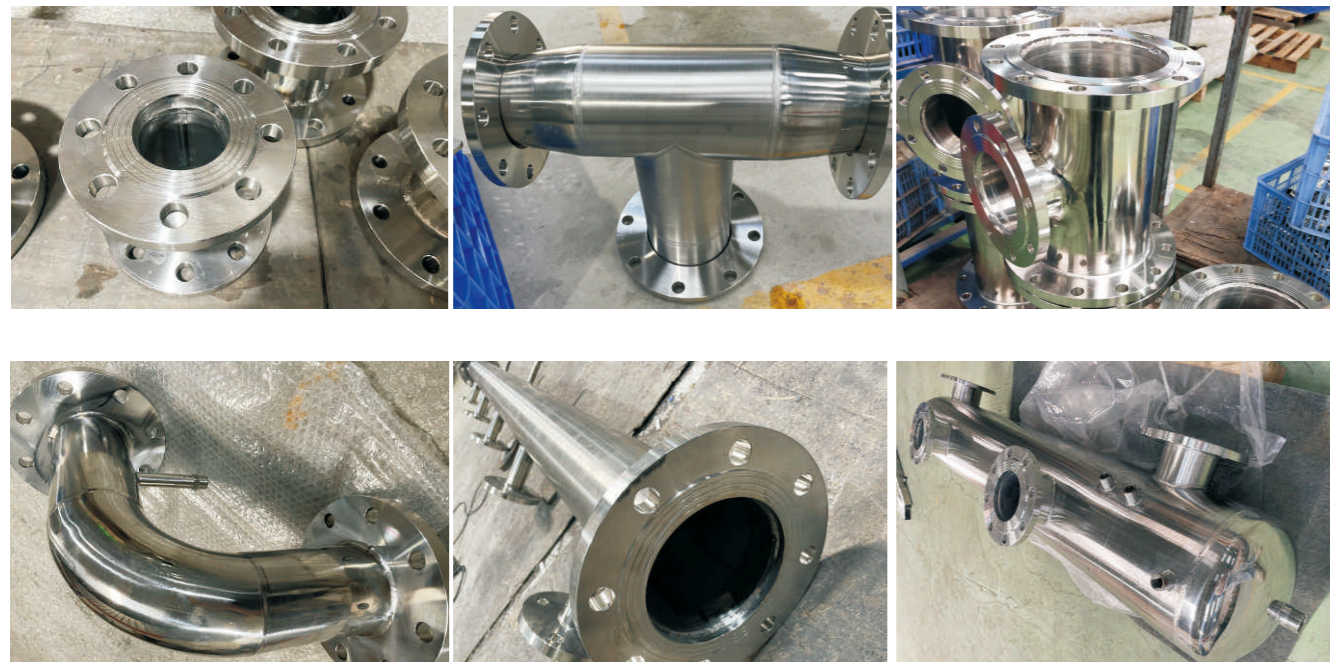


## One household, one meter

The components include stabilizing pipes before and after the water meter, valves, pressure gauges, etc. They are easy to install and can be used interchangeably with various water supply pipes. There are no pollutants on the construction site, and they do not pollute the environment.



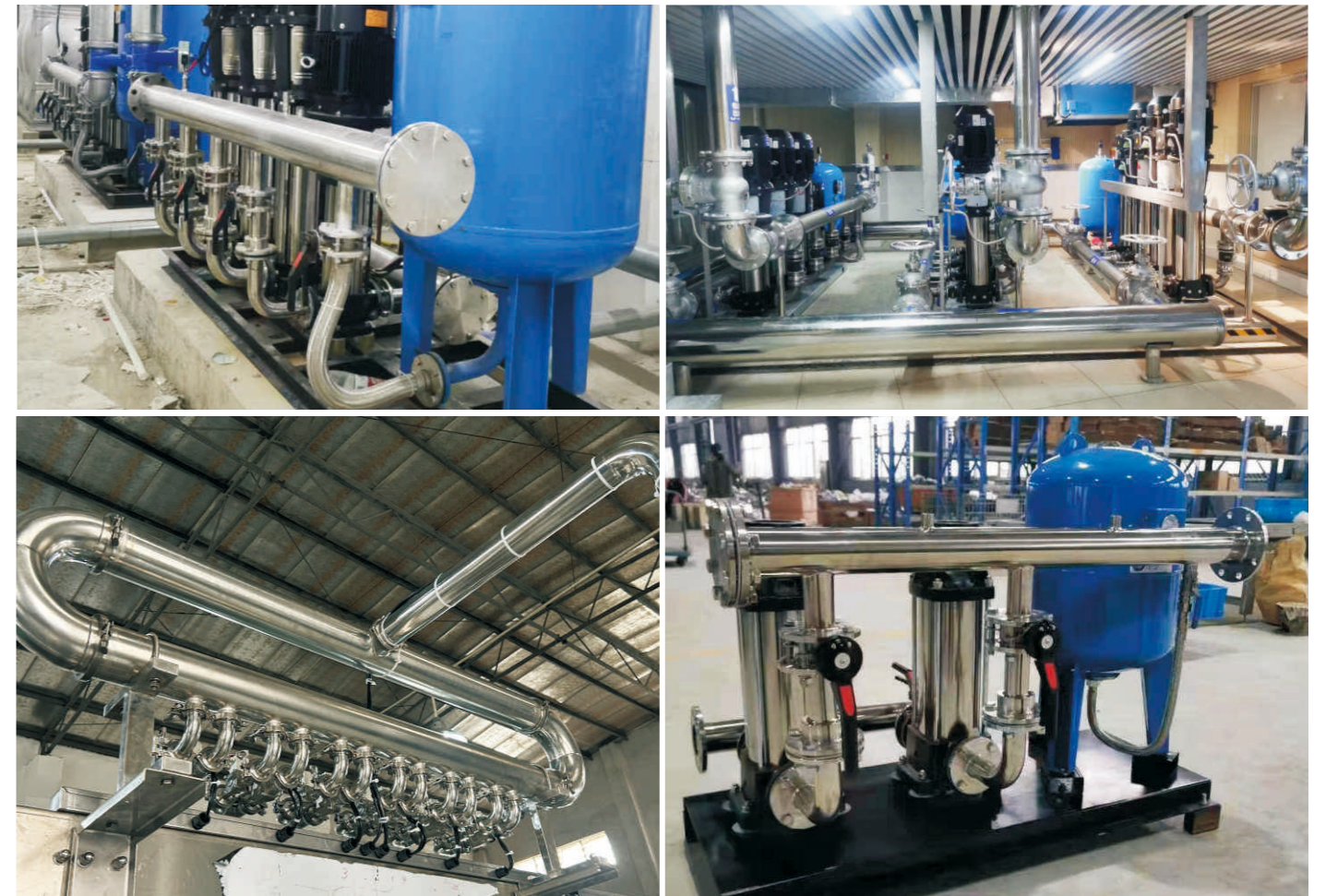
## Stainless steel flange short pipe



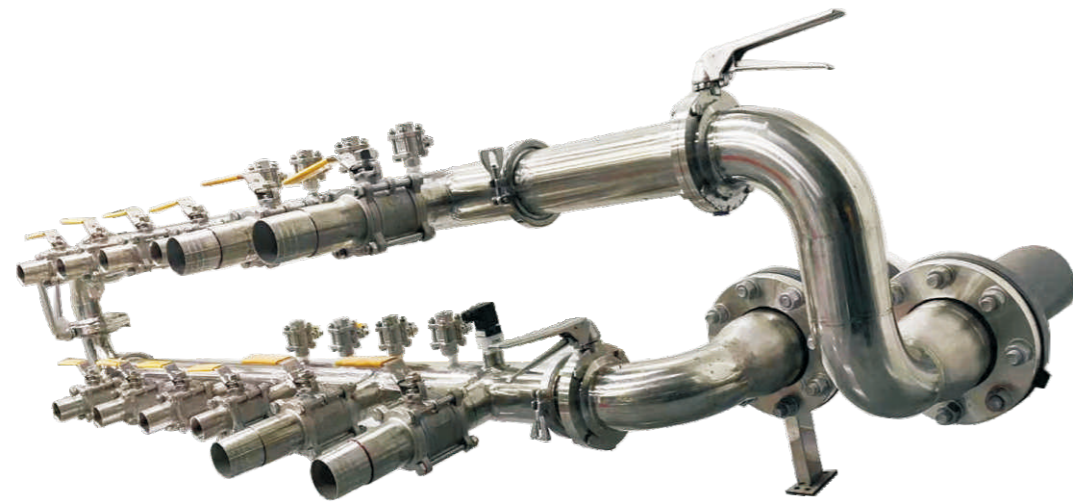
## Fire fighting, municipal administration, and domestic water use



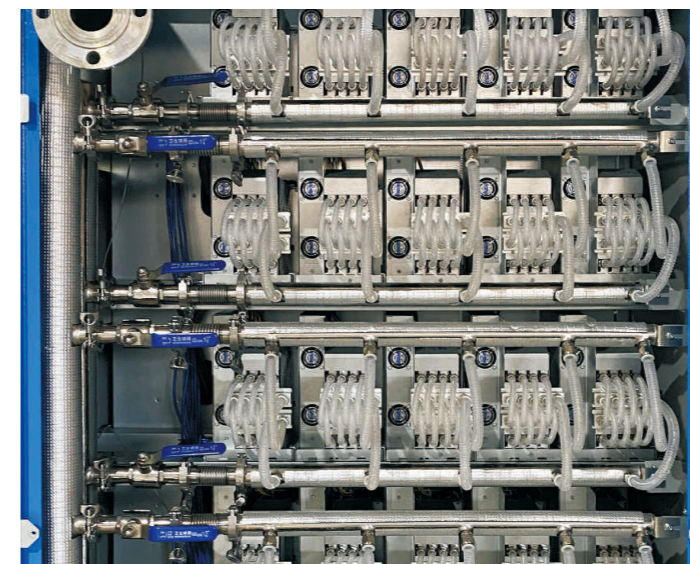
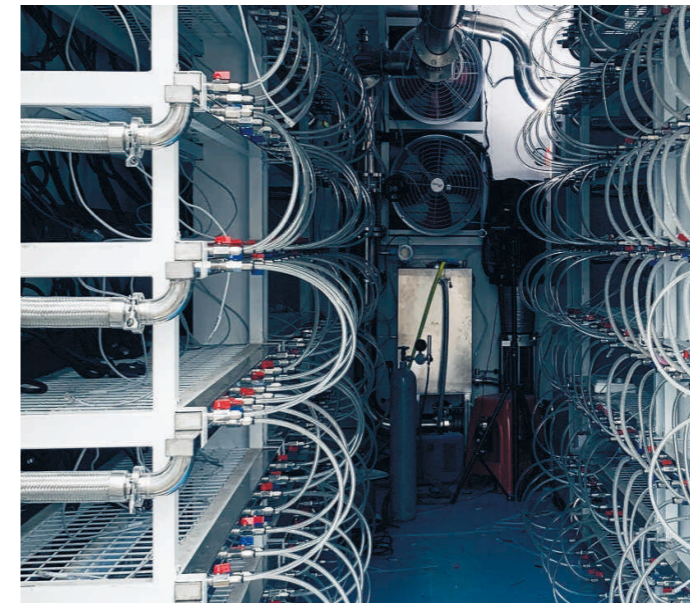
## Equipment pipeline



## Stainless steel flange short pipe



## Water-cooled liquid cooling pipeline



# PRODUCT LIST

Stainless Steel Pipe, Stainless Steel Fitting and Hydraulic Installation Tool

## Specification(EN standard)

Outer Diameter	OD tolerance	Thickness	thickness tolerance
15	±0.10	1.0	±0.10
18	±0.10	1.0	±0.10
22	±0.11	1.2	±0.10
28	±0.14	1.2	±0.10
35	±0.18	1.5	±0.10
42	±0.21	1.5	±0.10
54	±0.27	1.5	±0.10
64	±0.32	2.0	±0.15
76.1	±0.38	2.0	±0.15
88.9	±0.44	2.0	±0.15
108.0	±0.54	2.0	±0.15
133.0	±1.00	3.0	±0.30
159.0	±1.00	3.0	±0.30
219.0	±1.50	3.0	±0.30

\*Standard: EN10312:2002

## Specification(GB standard)

Outer Diameter		OD tolerance	Thickness		thickness tolerance
series I	series II		S1	S2	
12.7	—	±0.10	0.8	0.6	±10%S
16	15.9	±0.10	1.0	0.8	
18	—	±0.11	1.2	1.0	
20	22.2	±0.11	1.2	1.0	
22	—	±0.14	1.2	1.0	
25.4	28.6	±0.14	1.2	1.0	
28	—	±0.17	1.5	1.2	
32	34	±0.17	1.5	1.2	
35	—	±0.21	1.5	1.2	
40	42.7	±0.21	1.5	1.2	
42	—	±0.26	1.5	1.2	
50.8	48.6	±0.26	1.5	1.2	
54	—	±0.32	1.5	1.5	
60.3	—	±0.32	1.5	1.5	
63.5	—	±0.38	2.0	1.5	
76.1	—	±0.38	2.0	1.5	
88.9	—	±0.44	2.0	—	
101.6	—	±0.54	2.0	—	
108	—	±0.54	2.0	—	


\*Standard: GB/T 19228.2-2011

OD	OD tolerance	Thickness	thickness tolerance
133	±0.66	2.5	±0.3
159	±0.80	2.5	
219.1	±1.10	3.0	
273.1	±1.37	4.0	
323.9	±1.62	4.0	

\*standard: GB/T 12771-2008


## Fittings Specifications

### Coupling (V)



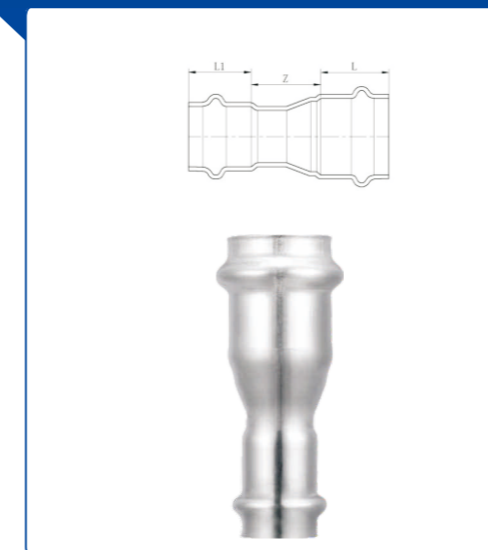
Size (mm)	L	z
15	53	13
18	53	13
22	56	14
28	60	14
35	69	19
42	81	17
54	93	21
76.1	158	38
88.9	165	35
108	190	36

### Coupling (M)



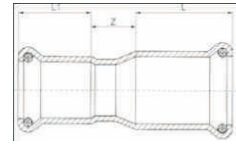
Size (mm)	L	z
15	50	9
18	50	9
22	51	9
28	58	12
35	65	11
42	76	12
54	87	13
76.1	143	33
88.9	164	38
108	196	42

### Reducing Coupling (V)



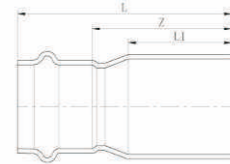
Size (mm)	L	L1	Z
18x15	20	20	25
22x15	21	20	29.5
22x18	21	20	26
28x15	23	20	31
28x18	23	20	26
28x22	23	21	31.5
35x22	25	21	35
35x28	25	23	33.5
42x28	32	23	36
42x35	32	25	27
54x28	36	23	58
54x35	36	25	44
54x42	36	32	33
76.1 x42	60	32	61
76.1 x54	60	36	46
88.9 x54	65	36	48
88.9 x76.1	65	60	51
108 x54	77	36	65
108 x76.1	77	60	67
108 x88.9	77	65	53

### Reducing Coupling (M)



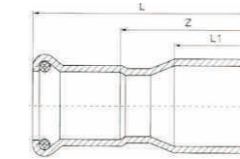
Size (mm)	L	L1	Z
18x15	20.5	20.5	18
22x15	21	20.5	16
22x18	21	20.5	21
28x15	23	20.5	21.5
28x18	23	20.5	19.9
28x22	23	21	22
35x22	27	21	13
35x28	27	23	15
42x28	32	23	18
42x35	32	27	16
54x28	37	23	24
54x35	37	27	19
54x42	37	32	20
76.1x42	51	32	48
76.1x54	51	37	46
88.9x54	60	37	49.7
88.9x76.1	60	51	57.7
108x54	76	37	57
108x76.1	76	51	64
108x88.9	76	60	63

### Reducer with plain end (V)



Size (mm)	L	L1	Z
18x15	60	30	40
22x15	64	30	44
22x18	67	30	47
28x15	73	32	53
28x18	67	32	47
28x22	68	32	47
35x15	86	35	66
35x18	81	35	61
35x22	88	35	67
35x28	75	35	52
42x22	99	44	78
42x28	100	44	77
42x35	87	44	62
54x28	115	50	92
54x35	108	50	83
54x42	106	50	74
76.1x54	167	100	131
88.9x54	183	110	147
88.9x76.1	209	110	149
108x54	208	120	171
108x76.1	241	120	166
108x88.9	222	120	157

### Reducer with plain end (M)



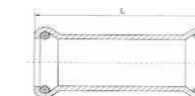
Size (mm)	L	L1	Z
18x15	60	28	39
22x15	61.5	28	40.5
22x18	63	32	42
28x15	71.5	30	50.5
28x18	74	35	53
28x22	65	30	40.5
35x15	79	40	58
35x18	77.5	40	56.5
35x22	80	30	54.5
35x28	84	40	56
42x22	79	40	53.5
42x28	80	40	52
42x35	86	37	53.5
54x28	99	54	71
54x35	108.5	54	76
54x42	102	48	64
76.1 x54	138.5	76	100
88.9 x54	152	89	92
88.9 x76.1	175.5	89	112.5
108 x54	180	108	143
108 x76.1	201	108	146
108 x88.9	209	108	146

### Slip Coupling (V)



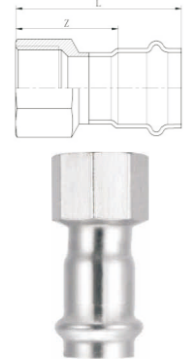
Size (mm)	L
15	65
18	80
22	85
28	95
35	107
42	120
54	135
76.1	234
88.9	266
108	305

### Slip Coupling (M)



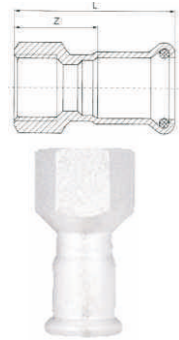
Size (mm)	L
15	80
22	85
28	96
35	105
42	120
54	138
76.1	220
88.9	250
108	300

### Adaptor with female thread (V)



Size (mm)	L	Z
15x1/2	56	37
15x3/4	56	36
18x1/2	58	38
18x3/4	59	39
22x1/2	57	37
22x3/4	60	49
22x1	64	43
28x3/4	61	38
28x1	65	42
35x11/4	65	40
42x11/2	72	40
54x2	84	48

### Adaptor with female thread (M)



Size (mm)	L	Z
15x1/2	49	28.5
15x3/4	50	28
18x1/2	48	27.5
18x3/4	49	28.5
22x1/2	49	28
22x3/4	49	28
22x1	54	33
28x3/4	51	28
28x1	57	34
35x11/4	64	37
42x11/2	70	38
54x2	82	45

### Adaptor with male thread (V)



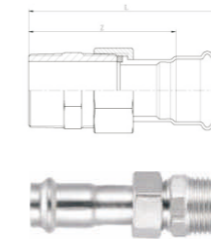
Size (mm)	L	Z
15x1/2	60	40
15x3/4	61	41
18x1/2	61	41
18x3/4	65	45
22x1/2	62	41
22x3/4	65	44
22x1	69	48
28x3/4	66	43
28x1	70	47
35x11/4	70	45
42x11/2	77	45
54x2	88	52
76.1x2 1/2	126	66
88.9x3	135	70
108x4	157	80

### Adaptor with male thread (M)



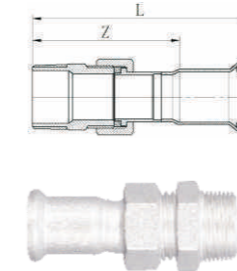
Size (mm)	L	Z
15x1/2	51	30.5
15x3/4	54	33
18 x 1/2	50	29.5
18 x3/4	54	33.5
22x1/2	51	30
22x3/4	54	33
22 x 1/2	51	30
28 x3/4	56	33
28 x1	60	37
35x11/4	68	41
42x11/2	75	43
54x2	88	51
76.1 x 21/2	121	70
88.9 x 3	136	76
108.0x4	160	84

### Adaptor Union (M)



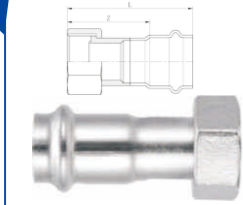
Size (mm)	L	Z
15 x 1/2	94	74
15 x 3/4	94	74
18 x 1/2	98	78
18 x 3/4	97	77
22 x 1/2	98	77
22x 3/4	98	77
22x1	104	83
28 x 3/4	109	86
28 x1	107	84
28x 11/4	113	90
35 x 11/4	112	87
35 x 11/2	111	86
42x 11/2	122	90
54x2	135	99

### Adaptor Union (M)



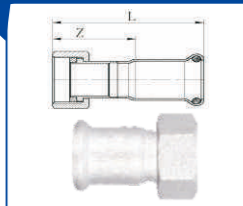
Size (mm)	L	Z
15 x 1/2	82	61.5
15 x3/4	84	63.5
18 x 1/2	82	61.5
18 x3/4	84	63.5
22 x1/2	92	71
22 x3/4	80	59
22x 1	91	70
28 x3/4	92	69
28x 1	94	71
28 x 11/4	102	79
35 x 11/4	103	76
35 x 11/2	116	89
42 x 11/2	113	81
54x2	121	84

### Union adaptor (V)



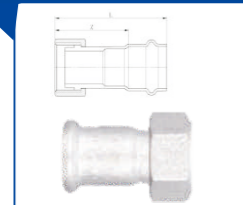
Size (mm)	L	Z
15 x 1/2"	63	43
22x3/4"	67	46
28 x 1"	74	51
35 x 1-1/4"	72	47
42 x 1-1/2"	80	48
54x2"	90	54

### Union adaptor (M)



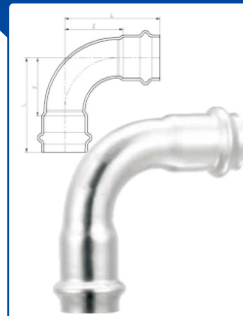
Size (mm)	L	Z
15 x 1/2"	44	23.5
22x3/4"	46	25
28 x 1"	50	27
35 x 1-1/4"	53	26
42 x 1-1/2"	61	29
54x2"	67	30

### Crox adapter (M)



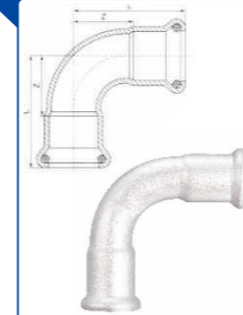
Size (mm)	L	Z
15 x 1/2	63	43
22 x 3/4	69	48
28 x 1	74	51

### Bend 90° (V)



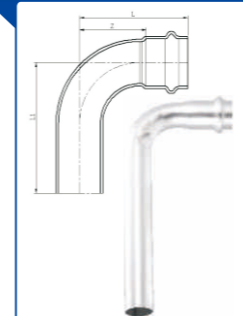
Size (mm)	L	Z
15	45	25
18	50	30
22	54	33
28	65	42
35	77	52
42	95	63
54	114	78
76.1	162	107
88.9	188	128
108	260	185

### Bend 90° (M)



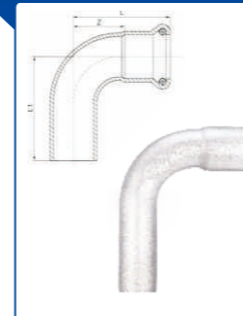
Size (mm)	L	Z
15	42.5	22
18	47	26.5
22	52.5	31.5
28	62	39
35	72	45
42	88	56
54	110	73
76.1	170	115
88.9	198	135
108	238	161

### Bend 90° with plain end (V)



Size (mm)	L	L1	Z
15	45	56	25
18	53	58	33
22	54	67	33
28	65	78	42
35	77	129	52
42	95	174	63
54	114	210	78
76.1	166	248	106
88.9	185	288	100
108	229	337	152

### Bend 90° with plain end (M)



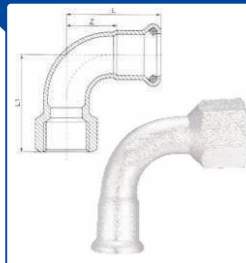
Size (mm)	L	L1	Z
15	42.5	45	22
18	47	52	26.5
22	52.5	58	31.5
28	62	73	39
35	72	87	45
42	88	100	56
54	110	128	73
76.1	170	186	115
88.9	198	214	135
108	238	45	22

### Bend 90° with female thread (V)



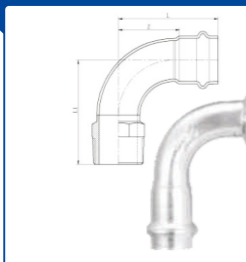
Size (mm)	L	L1	Z
15x1/2	45	43	25
18x1/2	50	48	30
18x3/4	50	49	30
22x3/4	54	51	33
28x1	65	64	42
35x11/4	77	76	52
42x11/2	95	88	63
54x2	114	110	78

### Bend adaptor 90° with female thread (M)



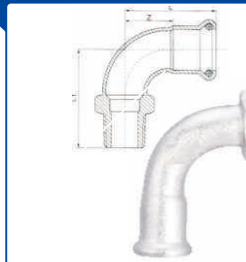
Size (mm)	L	L1	Z
15x1/2	42.5	40	22
18x1/2	47	44	26.5
18x3/4	55	60	34.5
22x3/4	52.5	50	31.5
28x1	62	62	39
35x1 1/4	72	70	45
42x1 1/2	114	109	82
54x2	114	136	107

### Bend adaptor 90° with male thread (V)



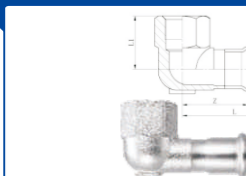
Size (mm)	L	L1	Z
15x1/2	45	46	25
18x1/2	50	51	20
18x3/4	50	54	20
22x3/4	54	56	33
28x1	65	69	42
35x1 1/4	77	81	52
42x1 1/2	95	92	63
54x2	114	113	78

### Bend adaptor 90° with male thread (M)



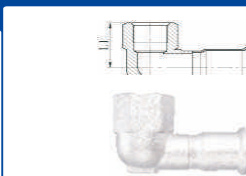
Size (mm)	L	L1	Z
15x1/2	42.5	42	22
18x1/2	47	47	26.5
18x3/4	59	61	38.5
22x3/4	52.5	55	31.5
28x1	62	65	39
35x1 1/4	72	75	45
42x1 1/2	88	87	56
54x2	110	112	73

### Elbow adaptor 90° with female thread (V)



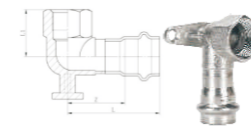
Size (mm)	L	L1	Z
15x1/2	57	25.5	27
18x1/2	58	29.5	38
22x1/2	59	25	38
22x3/4	59	31	38
28x1	71	34	48

### Elbow adaptor 90° with female thread (M)



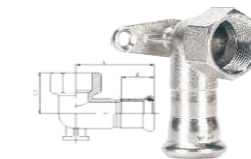
Size (mm)	L	L1	Z
15x1/2	48	24	28
18x1/2	56	24	37
22x1/2	49	30	28
22x3/4	52	28	32
28x1	60	32	37

### Elbow 90° with wall plate (V)



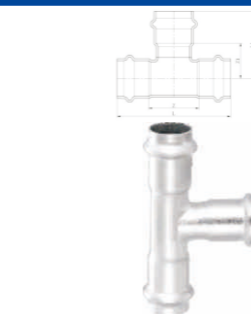
Size (mm)	L	L1	Z
15x1/2	55	26	25
22x3/4	59	30	38
28x1	61	33	38

### Elbow 90° with wall plate (M)



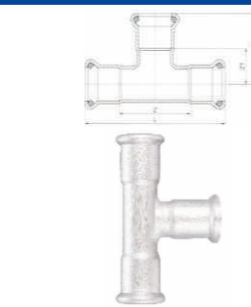
Size (mm)	L	L1	Z
15x1/2	48	24	28
22x3/4	52	28	32
28x1			

### Equal Tee (V)



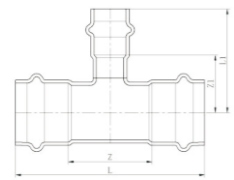
Size (mm)	L	Z	L1	Z1
15	70	30	43	23
18	73	33	46	26
22	78	36	48	27
28	90	44	52	29
35	107	57	64	39
42	124	60	69	37
54	160	88	75	39
76.1	237	118	120	60
88.9	263	130	132	65
108	306	152	152	75

### Equal Tee (M)



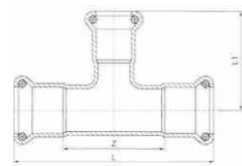
Size (mm)	L	Z	L1	Z1
15	67	26	36	15.5
18	70	29	37	16.5
22	77	35	39	18
28	88	42	44.5	21.5
35	102	48	51.5	24.5
42	120	56	60.5	28.5
54	144	70	72.5	35.5
76.1	232	110	115	64
88.9	262	135	127	67
108	312	156	152	76

### Reducing Tee (V)



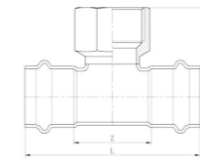
Size (mm)	L	Z	L1	Z1
18x15	73	33	46	26
22x15	78	36	47	27
22x18	78	36	48	28
28x15	90	44	50	30
28x18	90	44	51	31
28x22	90	44	52	31
35x15	107	57	54	34
35x18	107	57	55	35
35x22	107	57	55	34
35x28	107	57	56	33
42x15	124	60	57	37
42x18	124	60	58	38
42x22	124	60	59	38
42x28	124	60	60	37
42x35	124	60	68	43
54x15	160	88	63	43
54x18	160	88	64	44
54x22	160	88	65	44
54x28	160	88	66	43
54x35	160	88	71	46
54x42	160	88	75	43
76.1x42	237	118	87	55
76.1x54	237	118	86	50
88.9x54	263	130	93	57
88.9x76.1	263	130	127	67
108x54	306	152	102	66
108x76.1	306	152	137	77
108x88.9	306	152	141	74

### Reducing Tee (M)



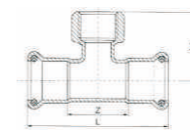
Size (mm)	L	Z	L1	Z1
18x15	70	29	37	16.5
22x15	77	35	39	18.5
22x18	77	35	39	18.5
28x15	88	42	42	21.5
28x18	88	42	42	21.5
28x22	88	42	42	21
35x15	102	48	45.5	25
35x18	102	48	45.5	25
35x22	102	48	46	25
35x28	102	48	48.5	25.5
42x15	120	56	48.5	28
42x18	120	56	48.5	28
42x22	120	56	49	28
42x28	120	56	51.5	28.5
42x35	120	56	56	29
54x15	144	70	55	34.5
54x18	144	70	55	34.5
54x22	144	70	55.5	34.5
54x28	144	70	58	35
54x35	144	70	61.5	34.5
54x42	144	70	68	36
76.1x35	232	120	94	67
76.1x42	232	120	103	71
76.1x54	232	120	115	78
88.9x54	262	135	121	84
88.9x76.1	262	135	121	70
108x54	312	156	130	93
108x76.1	312	156	130	79
108x88.9	312	156	130	80

### Female Tee (V)



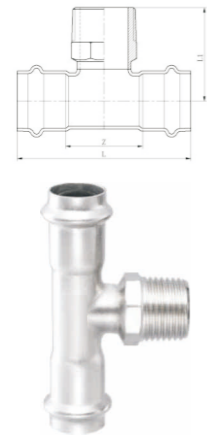
Size (mm)	L	L1	Z
15x1/2	70	30	33
18x1/2	73	33	35
18x3/4	73	33	36
22x1/2	78	36	36
22x3/4	78	36	37
28x1/2	90	44	39
28x3/4	90	44	40
28x1	90	44	44
35x1/2	107	57	43
35x3/4	107	57	44
35x1 1/4	107	57	52
42x1/2	124	60	46
42x3/4	124	60	47
42x1 1/2	124	60	57
54x1/2	160	88	52
54x3/4	160		53
54x2	160	88	69
76.1x3/4	238	118	83
76.1x2	238	118	77
88.9x3/4	264	130	89
88.9x2	264	130	83
108x3/4	306	152	99
108x2	306	152	93

### Female Tee (M)



Size (mm)	L	L1	Z
15x1/2	67	26	33.5
18x1/2	70	29	36
18x3/4	70	29	34
22x1/2	77	35	36.5
22x3/4	77	35	39
28x1/2	88	42	39
28x3/4	88	42	39
28x1	88	42	46.5
35x1/2	102	48	40.5
35x3/4	102	48	45
35x1 1/4	102	48	52.5
42x1/2	120	56	48
42x3/4	120	56	47
42x1 1/2	120	56	62
54x1/2	144	70	52
54x2	144	70	70.5
76.1x3/4	233	131	66
76.1x2	233	131	83
88.9x3/4	262	142	72.5
88.9x2	262	142	90.5
108x3/4	315	163	84
108x2	315	163	104

### Male Tee (V)



Size (mm)	L	L1	Z
15x1/2	70	30	36
18x1/2	73	33	38
22x1/2	78	36	39
22x3/4	78	36	42
28x1/2	90	44	42
28x3/4	90	44	45
28x1	90	44	49
35x1/2	107	57	46
35x3/4	107	57	49
35x1 1/4	107	57	57
42x1/2	124	60	49
42x3/4	124	60	52
42x1 1/2	124	60	60
54x1/2	160	88	55
54x3/4	160	88	58
54x2	160	88	72
76.1x3/4	238	118	89
76.1x2	238	118	84
88.9x3/4	264	130	95
88.9x2	264	130	90
108x3/4	306	152	105
108x2	306	152	100

### Male Tee (M)



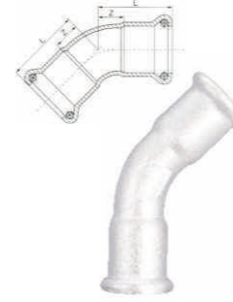
Size (mm)	L	L1	Z
15x1/2	67	26	28
18x1/2	70	29	39
22x1/2	77	35	39
22x3/4	77	35	42
28x1/2	88	42	42
28x3/4	88	42	45
28x1	88	42	48
35x1/2	102	48	45.5
35x3/4	102	48	48.5
35x1 1/4	102	48	55.5
42x1/2	120	56	50
42x3/4	120	56	53
42x1 1/2	120	56	62
54x1/2	143	69	56
54x3/4	143	69	61
54x2	143	69	76
76.1x3/4	233	131	72
76.1x2	233	131	89
88.9x3/4	262	142	80.5
88.9x2	262	142	95.5
108x3/4	315	163	88
108x2	315	163	109

### Bend 45° (V)



Size (mm)	L	Z
15	34	14
18	36	16
22	38	17
28	44	21
35	52	27
42	63	31
54	73	37
76.1	115	55
88.9	129	64
108	164	68

### Bend 45° (M)



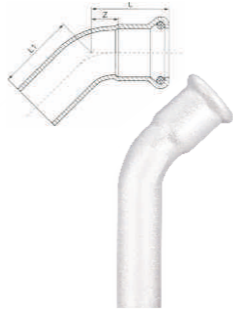
Size (mm)	L	Z
15	31	10.5
18	32	11.5
22	36	15
28	40.5	17.5
35	47	20
42	57	25
54	69	32
76.1	110	55
88.9	128	65
108	153	76

### Bend 45° with plain end (V)



Size (mm)	L	L1	Z
15	34	41	14
18	36	42	16
22	38	48	17
28	44	54	21
35	52	81	27
42	63	99	31
54	73	127	37
76.1	115	205	55
88.9	125	230	58
108	145	255	68

### Bend 45° with plain end (M)



Size (mm)	L	L1	Z
15	31	33	10.5
18	32	34	11.5
22	36	39	15
28	40.5	48	17.5
35	47	54	20
42	57	66	25
54	69	82	32
76.1	110	126.5	55
88.9	128	144	65
108	153	168	77

### Cap (V)



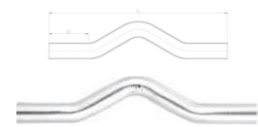
Size (mm)	L	Z
15	41	21
18	42	22
22	44	23
28	45	22
35	43	18
42	50	18
54	58	22
76.1	94	34
88.9	104	39
108	125	48

### Cap (M)



Size (mm)	L	Z
15	33.5	13
18	34.5	14
22	33	12
28	37	14
35	41	14
42	47	15
54	52.5	15.5
76.1	85	34
88.9	97	37
108	105	29

### Crossover



Size (mm)	L	L1
15	175	32
18	204	43
22	212	43
28	261	53

## Fittings Specifications

### Grooved Reducing Coupling



Size (mm)
DN80X65
DN100X65
DN100X80
DN125X65
DN125X80
DN125X100
DN150X65
DN150X80
DN150X100
DN150X125
DN200X65
DN200X80
DN200X100
DN200X125
DN200X150
DN250X65
DN250X80
DN250X100
DN250X125
DN250X150
DN250X200
DN300X65
DN300X80
DN300X100
DN300X125
DN300X150
DN300X200
DN300X250

### Grooved Bend 90°



Size (mm)
DN65
DN80
DN100
DN125
DN150
DN200
DN250
DN300

### Grooved Tee



Size (mm)
DN65
DN80
DN100
DN125
DN150
DN200
DN250
DN300

### Grooved Reducing Tee



Size (mm)
DN80X65
DN100X65
DN100X80
DN125X65
DN125X80
DN125X100
DN150X65
DN150X80
DN150X100
DN150X125
DN200X65
DN200X80
DN200X100
DN200X125
DN200X150
DN250X65
DN250X80
DN250X100
DN250X125
DN250X150
DN250X200
DN300X65
DN300X80
DN300X100
DN300X125
DN300X150
DN300X200
DN300X250

### Grooved Bend 45°



Size (mm)
DN65
DN80
DN100
DN125
DN150
DN200
DN250
DN300

### Grooved Flange



Size (mm)
DN65
DN80
DN100
DN125
DN150
DN200
DN250
DN300

### Grooved Coupling



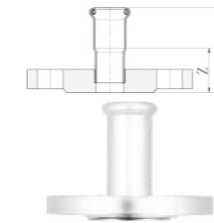
Size (mm)
DN65
DN80
DN100
DN125
DN150
DN200
DN250
DN300

### Flange (V)



Size (mm)	L	Z
28	77	54
35	73	48
42	79	47
54	81	45
76.1	113	53
88.9	119	52
108	134	57

### Flange (M)



Size (mm)	L	Z
28	115	92
35	140	113
42	150	118
54	165	128
76.1	185	134
88.9	200	140
108	220	144

# INTRODUCTION OF PRESS TOOL

## Press tool

- High Precision and efficiency , Stable and durable
- Light and labor-saving, Safe and long service life
- 270° rotary tong head to meet various kinds of working condition



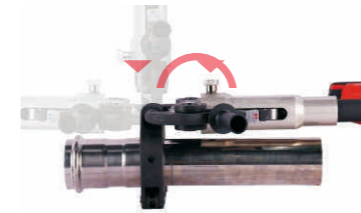
RP306



RP318

MODEL	RP306	RP318
Rated Pressure	32KN (single valve)	32KN (double valves)
Weight	2.6kg(excluding battery) 3kg (including 2.5Ah battery)	2.9kg(excluding battery) 3.3kg (including 2.5Ah battery)
Battery Specification	18v 2.5Ah Samsung battery cell, 45minute fast charging lithum battery (charging capacity display)	
Crimping Range	Stainless Steel pipe: OD15~54mm Copper Pipe: OD15~108mm Pex Pipe: OD15~108mm	
Crimping Times (Full battery)	200~400 times (according to different pipe diameters)	
Crimping Cycle	7 seconds	
LED Light	YES	
LED Screen	NO	YES

## Press tool



MODEL	RP680
Rated Pressure	65KN
Weight	4.98kg(excluding battery)
Battery Specification	18v 2.5Ah Samsung battery cell
Crimping Range	OD76.1~108mm Stainless Steel pipe & Carbon Steel Pipe
Crimping Cycle	10-25 seconds

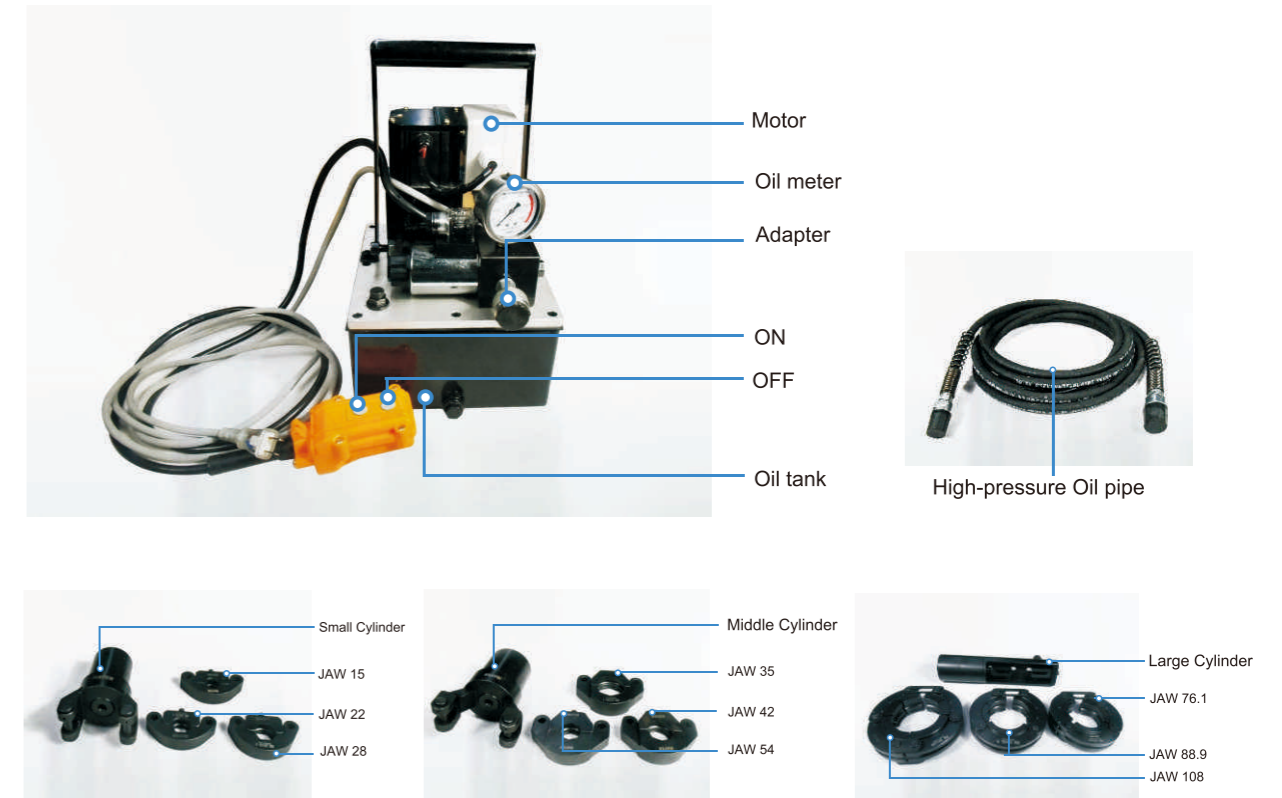
## Electric hydraulic Pump

Crimping Range: OD 15mm~OD108mm

High Precision and good performance, more Stable and durable

The leakproofness and pullout-resistance of the joint reaches the high standard of industry

Match different cylinder, transmit power to different jaw and sling.



## INSTALLATION PROCEDURE



### 1. Cutting

Confirm the pipe length needed, and cut it with approved burr-free cutters. Oxy-acetylene torches and abrasive cut-off wheels are not suitable.



### 2. Deburring

Carefully deburr all pipe cuts inside and outside with a deburrer. Remove any cutting residue thoroughly.



### 3. Assess mark insertion depth

Mark the pipe with a fine-point felt pen where it meets the fitting for verification of full insertion.



### 4. Check the o-ring

Check the positioning of the o-ring, and lubricate the o-ring with water or talc to ease insertion of the pipe if necessary. Make sure that the pipe and fittings are clean, no oil and sundries are covered on it.



### 5. Inserting the pipe in fitting

The pipe is inserted in the fitting with a slight rotating motion until it hits the stop. Check the pipe against the felt pen mark to ensure complete insertion. And the insertion should not be forced at an angle, which will easily cause damage to the o-ring.



### 6. Pressing

Position the jaw over the fitting, creating a perfect fit with the internal channel of the jaw around the toroidal seat of the fitting. Make sure that the jaws are perpendicular to the joint, and squeeze the trigger to initiate the press cycle, holding it down for the full duration of press cycle.



### 7. Confirming the size of joint

Confirm the size of joint by measuring the section dimension with a special gauge.

## ENTERPRISE CASE

